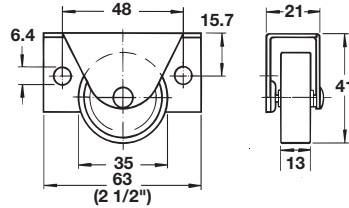


Castors

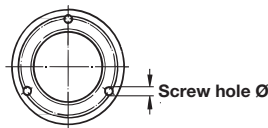
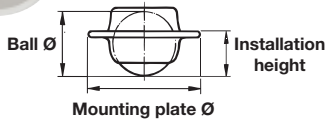
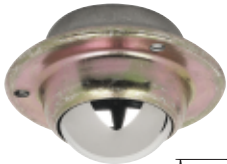


Bed Box Caster

- With screw-on mounting plate
 - Bed box casters feature a wide tread for easy movement on carpet
 - The side mounting facility and low height make it suitable for installation in limited clearance areas
- Load capacity per caster: **40 kg** (88 lbs.)
 Material: Housing: steel
 Wheel: hard plastic

Finish/Color	Item No.
zinc-plated, white wheel	660.98.904
black zinc, black wheel	660.98.304

*Packing: 500 pcs.



Ball Casters

- With screw-on mounting plate and reinforced base
- The ball casters can be moved in any direction
- When mounted upside down they can be used as a conveyor system for transporting heavy loads

Material: Housing: steel; Finish: yellow chromate
 Ball: steel; Finish: chrome-plated

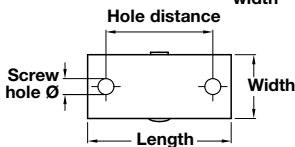
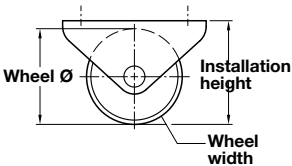
Item No.	661.02.210	661.02.230	661.02.250
Ball Ø	13 mm	20 mm	25 mm
Approx. load capacity per caster	6 kg (13 lbs.)	12 kg (26 lbs.)	17 kg (37 lbs.)
Installation height	10 mm	15 mm	20 mm
Ø insert part	16 mm	23.5 mm	33 mm
Insert depth	5.5 mm	8.5 mm	12 mm
Mounting plate Ø	25 mm	35 mm	45 mm
Screw hole Ø	2 mm	3 mm	3 mm

*Packing: 100 pcs.

Coal Box Casters

- With screw-on mounting plate, free-running
- Suitable for all low level storage boxes
- When mounted upside down they can be used as a conveyor system for transporting heavy loads

Material: Housing: steel; Finish: zinc-plated
 Wheel: plastic; Color: black

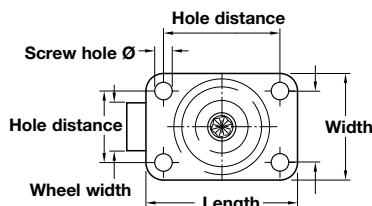
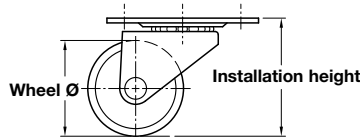


	Item No.			
	661.23.322	661.23.304	661.23.313	661.25.906
Wheel Ø	15 mm	25 mm	30 mm	45 mm
Load capacity per caster	15 kg (33 lbs.)	20 kg (44 lbs.)	25 kg (55 lbs.)	50 kg (110 lbs.)
Installation height	17.5 mm	28 mm	32 mm	48.5 mm
Mounting plate				
Length x width	30 x 17 mm	40 x 17 mm	45 x 20 mm	67 x 27 mm
Hole distance	20 mm	30 mm	35 mm	54 mm
Wheel width	13 mm	13 mm	15 mm	19 mm
Screw hole Ø	4 mm	4.3 mm	5 mm	5.2 mm

*Packing: 100 pcs.

Swivel Caster

- With screw-on mounting plate
 - Plastic, abrasion-proof wheels run in friction bearings
 - Hard wheel surface, suitable for soft floor coverings
 - Double ball-bearing in the ring mount, free-running
- Material: Housing: steel; Finish: zinc-plated
 Wheel: plastic; Color: black



	Item No.	
	662.03.861	662.03.870
Wheel Ø	30 mm	40 mm
Load capacity per caster	30 kg (65 lbs.)	35 kg (77 lbs.)
Installation height	48 mm	63 mm
Mounting plate		
Length x width	38 x 38 mm	42 x 42 mm
Hole distance	30 x 30 mm	30 x 30 mm
Wheel width	15 mm	20 mm
Screw hole Ø	4.3 mm	5 mm

Packing: 1 pc.



Dimensions in mm
 Inches are approximate

*Minimum order quantity is 1 piece.

Pan head screws

page 398